



**NELSON TASMAN  
EMERGENCY MANAGEMENT**

**GROUP**

[Printable version  
in PDF \(200KB\)](#)

Issue  
No 6

December  
2009

# Ready Steady Safe

Nelson Tasman Regional Civil Defence News

## inside

Glenhope fire causes CD activation ... [more](#)

Emergency management goes into the community ... [more](#)

Tsunami – what do I really need to do? ... [more](#)

CDEM Group training ... [more](#)

Have you seen the new civil defence website? ... [more](#)

MCDEM launches schools' civil defence resource... [more](#)

From the Civil Defence Group Controller ... [more](#)

Civil Defence news in brief ... [more](#)

How to subscribe or unsubscribe ... [more](#)

## upcoming dates

8 December 2009  
Ministry of Civil Defence and Emergency Management training - Introduction to Psychosocial Support by Sarb Johal in Wellington

6 and 7 February 2010  
NZ RT2 Murchison Exercise

9 February 2010  
Welfare Operational Team training - EMANZ

## Going on holiday? Keep civil defence in mind

If you're planning to be away this summer there are a few things you should do to make sure you remain safe from disaster. Here are easy to follow steps from the Nelson Tasman Emergency Management Office.

### Know your area...

Be aware of the hazards that are present at your holiday destination. Flooding is the most common cause of civil defence emergencies in NZ. Take extra care when camping near rivers. And of course don't swim in swollen rivers.

### Know your weather...

Keep an eye on the forecast – that way you'll be ahead of the game when the storm strikes! The Metservice website ([www.metservice.co.nz](http://www.metservice.co.nz)) has a free email service that provides weather warnings.

### Tsunami...

The subject of tsunami is topical again. Fortunately Tasman Bay and Golden Bay are at less risk from tsunami than other parts of NZ. If you are near the coast when a large earthquake happens, move immediately inland or to higher ground. Don't wait for an official warning and don't return until the all clear is given.

### Know where to get information...

When you're on holiday the radio is usually the best source of up to date information. Stations that carry local content are ideal to tune into. In Nelson Tasman we use More FM 93.0 and Classic Hits 89.9 to broadcast urgent messages. Many regions also have websites with civil defence information. In Nelson Tasman our site is [www.nelsontasmancivildefence.co.nz](http://www.nelsontasmancivildefence.co.nz)



Balloon Santa - happy holidays.

### Get your car ready...

If you're in your car or driving when a disaster strikes, follow these simple steps:

- You may be stranded in your vehicle for some time. A flood, snow storm or major traffic accident could make it impossible to proceed
- Keep walking shoes, a waterproof jacket, essential medicines, snack food, water and a torch in your car
- In an earthquake, pull over to the side of the road and stop
- Don't drive in floodwaters
- You can get up to date roading information at [www.aaroadwatch.co.nz](http://www.aaroadwatch.co.nz)

### A family plan...

10 February 2010  
Welfare Supervisor Training  
- EMANZ

15 and 16 March 2010  
Emergency Operating Centre  
II training

23, 24, and 25 March 2010  
Emergency Operating Centre  
III training

22, 23 March 2010  
Ministry of Civil Defence  
and Emergency Management  
Controllers Course,  
Christchurch

24 and 25 March 2010  
Ministry of Civil Defence  
and Emergency Management  
Recovery Managers course,  
Christchurch

26 March 2010  
Ministry of Civil Defence  
and Emergency Management  
Public Information Managers  
training, Christchurch

29 February 2010  
Welfare training –  
registration forms

31 May 2010  
Welfare training – table top  
exercise for welfare agencies

### Could you cope for three days?

We promote the message that families should be able to cope on their own for three days in an emergency. It's no different when you're on holiday, though it takes a bit more thought. You need to have enough food and water for three days, plus other essential supplies. There's a good list online at [www.getthru.govt.nz](http://www.getthru.govt.nz)

Finally, when holidaying with your family, always have a plan for how you will reunite with each other if disaster strikes. This could be as simple as "We will meet back at the caravan". It's important you do this because if a disaster strikes, family members could be in different locations and phones may not be working. You should have a plan like this for your family home as well.

For more information about how to keep yourself safe visit [www.getthru.govt.nz](http://www.getthru.govt.nz) or call the Nelson Tasman Emergency Management Office on 546 9500.

Contact: Roger Ball, 546 9500

## Glenhope fire causes CD activation

Civil Defence staff from Nelson and St Arnaud were activated following a major fire in the Glenhope-Tadmire area on 25 November.

The blaze burned one home and threatened a number of others. Emergency Management staff attended the Emergency Operations Centre at Rural Fire Network in Richmond. A contingency plan was drawn up to look after people who might have to be evacuated as a result of the fire.

Fortunately the blaze was contained during the night and further evacuations were not required. Smoke from the fire was plainly visible across the Waimea Plains and the photo shows the effect it had on the sunset!



The sunset during the Glenhope fire (Photo Kim Arnold).

Contact: Roger Ball, 546 9500

## links

[Nelson City Council](#)

[Tasman District Council](#)

[Nelson/Tasman Emergency Management](#)

[Get Ready, Get Thru](#)

[Ministry of Civil Defence and Emergency Management](#)

[Ministry of Health - Pandemic influenza](#)

[top](#)

## Emergency management goes into the community

As part of ongoing public education efforts, the Civil Defence team often sets up community displays. It was great one day to get a call from Garin College about preparing for emergencies.

Debbie de Geus regularly sets up displays in libraries, at community events, in workplaces, Council windows and at schools, amongst many other places.

When Garin College decided to plan for whole school topic learning about preparing for emergencies, Debbie was keen to help out.

She set up the Emergency Management stall in the library where students could



Display at Garin College.

"Questions like these really indicate that teenagers' imaginations are alive and well! I like to use them as an opportunity to get them to think a little deeper about what will happen to them in an emergency."

Keep an eye out for a display at your local

use it as material for their topic work, see a concrete display of how much food is really required for three days, and ask questions when she was able to be there in person.

"I got lots of great questions from the students on a huge variety of topics. For instance, 'will my house get washed away by a tsunami in Brightwater,' 'will my house get swallowed up in a crack during an earthquake' and 'will the Civil Defence Army come and save me in a helicopter during an emergency.'

library over the next coming months as Debbie starts to present "Getting Thru" displays around the outlying areas of our community. She will be coming to a library or Council near you!

**Contact: Debbie de Geus, 546 9500**

[top](#)

---

## Tsunami – what do I really need to do?

**There has been a great deal of media attention around tsunamis over the past five years. The September 29 tsunami in Samoa having cost the lives of more than 150 people.**

As we know many parts of Indonesia and the Pacific Islands have been devastated by the 'big wave.' For Nelson and Tasman a warning would be futile in the event of a tsunami generated by a quake near Wellington or Wanganui says Jim Burrows, Emergency Management Manager. The wall of water can travel at 600-800km/h and would be here in seven minutes – similar to Samoa's experience.

Even a sensor on the end of Farewell Spit wouldn't relay a warning in time. A four to six metre tsunami would occur once in 2,500 years, according to the Institute of Geological and Nuclear Sciences. Resident experts tell us Nelson may get a two to four metre wave once every 500 years. The wave would be comparable to a large storm and have little effect if it struck at low tide. There have been five reported tsunami that have hit the Nelson area (four in Nelson, one at Farewell Spit).

Tasman Bay, and to a lesser extent Golden Bay, are protected from most directions by land mass. A large earthquake in Chile or Alaska would give us 10-14 hours' warning of a tsunami, and South Pacific would give three to six hours.

[top](#)

---

Many of you might have heard the story about the school student studying natural disasters at school through 'What's the Plan Stan' and warning people around her – saving many lives in the process. This does outline the necessity for being prepared.

If there is a big earthquake, experts will recommend you get out of coastal areas as fast as possible. Before leaving the house, take your getaway kit.

So how to be prepared? Knowing and recognising when to self-evacuate and to find higher ground without waiting for a formal warning. Have a getaway kit and household plan. Have a computer at home? Try our website and these others for more information.

- [www.nelsontasmancivildefence.co.nz](http://www.nelsontasmancivildefence.co.nz)
- Ministry of Civil Defence at [www.civildefence.govt.nz](http://www.civildefence.govt.nz)
- GNS Science at [www.gns.cri.nz](http://www.gns.cri.nz)
- [www.geonet.org.nz](http://www.geonet.org.nz)

**Contact: Debbie de Geus, 546 9500**

## CDEM Group training

**As our bid for additional funding for training was successful we have embarked on an ambitious programme for this year. That training will cover:**

### **Emergency Operations Centre (EOC)**

We dispensed with the basic package (EOC I) as staff have a good rudimentary knowledge, and commenced with an initial two day introduction (EOC II) and a one day follow up for each the areas of Planning/Intelligence, Operations and Logistics (EOC III). We have already run two EOC II courses and the follow up EOC III which have basically been well received.

We intend to run two further EOC II and EOC III courses in the next year (2010). As a follow up we intend to run twice yearly (at least) sessions on the individual disciplines of Planning/Intelligence, Operations and Logistics, The first of these dealing with Logistics will happen prior to Xmas.

We are also hoping to develop and provide training for volunteers staffing Emergency Operation Centres in out-lying areas. Our own office staff will be involved in further education, for example relating to the writing and administration of 'exercises.'

[top](#)

### **Controllers Forum**

A day long Controllers Forum was held on 25 November. This brought together our Group and Local Controllers from around the region, together with representatives from the emergency service and District health Board. The Ministry of Civil Defence and Emergency Management ran an initial Controllers course in 2010. We will be sending people next year on the Ministry's Public Information Managers courses.

### **Welfare**

Welfare will be the focus of an intensive training programme both prior to and immediately after Christmas with several training courses. These courses will cover Personal Preparedness for Welfare Agencies, Welfare Centre Supervisors, and Welfare Centre Staff. The participants will include staff from Nelson City Council, Tasman District Council, and Local Government and Community Services agencies.

### **NZ-RT2**

Our Response Team, NZ-RT2, has an interesting programme involving up-skilling in rope rescue, vertical rope rescue, swift water rescue, pre-hospital emergency care, and many other topics. They are planning an exercise in Murchison on Waitangi weekend next year.

Contact Jim Burrows, 546 9500

## **Have you seen the new civil defence website?**

**If you've not yet seen the new regional civil defence website at [www.nelsontasmancivildefence.co.nz](http://www.nelsontasmancivildefence.co.nz), it's worth a look.**

Nelson City and Tasman District Councils, the NMDHB, Fire, Police and St Johns are part of this new regional Civil Defence site. There's info on disaster preparedness, response and recovery. Both Council websites link to this site and it is managed by the Nelson Tasman Emergency Management Office in conjunction with Nelson City Council's public communications team.

The site has three coloured levels of emergency status - green for no civil defence emergency, yellow for a civil defence event that is undeclared, and red for a declared civil defence event.



**A snapshot of the home page of the new Civil Defence website.**

The next phase will see more work done on a partner interface - more about that in the next year.

Take a look around, your feedback is welcome.

Contact: Penny Bloomberg, 546 0223

You can find information about getting prepared in schools and businesses, a collection of publications by the emergency management office, and a list of the civil defence partners and their contact information.

[top](#)

---

## MCDEM launches schools' civil defence resource

**Last August the Minister of Civil Defence launched a new, fully revised, schools' resource to help children, schools and families be better prepared for disasters.**

*What's the Plan Stan?* was distributed to all primary and intermediate schools. As well as being a teaching resource to help children understand and prepare for disasters, it is also designed to help schools develop their own emergency plans. A third purpose is to provide information that families can use to plan for emergencies at home and in their communities.

The handbook, website and CD-ROM include information, pictures, videos and links relating to the most recent disaster events in New Zealand and overseas. They include the Gisborne earthquake, New Zealand snow storms and flu outbreaks.

### Contents of What's the Plan Stan?

- a guide for teachers, including unit plans and activities
- a CD-Rom for teachers and students, including stories, interactive games, research material, tips for teachers and resources that can be cut and pasted into unit plans; the CD-Rom can also be run off the school's intranet.
- a website, [www.what'stheplanstan.govt.nz](http://www.what'stheplanstan.govt.nz)

[top](#)

---

## From the Civil Defence Group Controller

**From a response perspective, 2009 has been an interesting year for Civil Defence. Fortunately the extent of our involvement has been in monitoring rather than activation.**

### What the guide includes

- unit plans, activities and ideas to increase students' confidence in emergency planning and practice
- fact sheets about different types of disasters
- simulation and practice activities that involve the school and community agencies
- information about the roles of principals, Boards of Trustees and community agencies
- templates for the activities and suggested resources including books and websites.
- a CD-ROM with help for teachers and fun information for students.

**Contact: Felicity Cuzens, Ministry of Civil Defence and Emergency Management, 04 817 8277.**

A substantial amount of planning occurred with the A (H1N1) virus and there were several occasions when personnel were placed on standby for predicted heavy rain events. More recently the focus has been on tsunami threats.

We live in an area with numerous faultlines, a substantial coastline with the potential to be fairly easily isolated should a major event occur. This highlights the importance of taking an all hazards approach with our response planning. We continue to test and evaluate our systems and procedures and we are confident that we will have the ability to respond to the emergency that requires the use of our resources.

We are now moving into the summer season and our emergency services partners are gearing up to handle the emergencies or events that they may have to deal with. As usual, Civil Defence will be ready to support any of these services if and when required.

Civil Defence personnel in key positions should ensure that our Civil Defence office is informed by those persons who will be unavailable for Civil Defence duties particularly over the Christmas / New Year holiday season.

[top](#)



**Jim Frater**

One of the problems with being a Civil Defence volunteer is the motivation to continue training and reviewing processes to ensure that one is ready to respond to an emergency that may never happen. We are fortunate to have many dedicated volunteers who are willing to devote their time to ensure that we have a good response capability. As Group Controller, I am grateful for the willingness and level of expertise shown within our Civil Defence organisation.

I wish you an uneventful and relaxing holiday season.

**Contact: Jim Frater, 543 8445.**

---

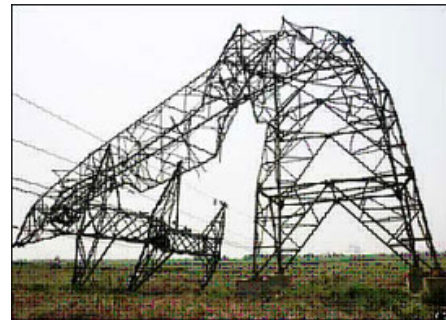
## Civil Defence news in brief

### **“Lifeline” Utilities working together**

In an emergency our access to power, water and roads could easily be disrupted for days - or possibly even weeks in a large earthquake. For that reason designated “lifeline” utilities have been working closely together in Nelson Tasman this year to plan for emergencies. The two councils, Network Tasman, Telecom, Transport NZ, Nelson Airport, Port Nelson and the Emergency Management Office are just some of the agencies involved.

### **Fuel study completed for the region**

The lifeline utility group this year commissioned a study on fuel storage in the region which showed some vulnerabilities for Nelson Tasman. Most of our fuel comes into the region by sea and is stored at Port Nelson. So we are dependent on the Port continuing to function in an emergency.



**A destroyed pylon [this one from China].**

Stocks at Port Nelson can sometimes be as low as only five days supply for the region. The study also found that, if the power was out, only three petrol stations in the region (none of which are in main urban areas) have the ability to access fuel from their underground tanks. The lifelines group will be following up on the report's findings.

[top](#)

---

## How to subscribe and unsubscribe

Ready Steady Safe is now using a new listserv service through Local Government Online. If you were already receiving Ready Steady Safe, you have been automatically subscribed to the listserv.

### To subscribe

- TO Email address: [listserv@listserv.localgovt.co.nz](mailto:listserv@listserv.localgovt.co.nz)
- Subject: leave blank
- Message: "subscribe CIVIL-DEFENCE-NEWSLETTER" with no quotes or other content, signatures or attachments
- Send the message
- Receive confirmation email

### To unsubscribe

1. TO Email address: [listserv@listserv.localgovt.co.nz](mailto:listserv@listserv.localgovt.co.nz)
2. Subject: leave blank
3. Message: "unsubscribe CIVIL-DEFENCE-NEWSLETTER" with no quotes or other content, signatures or attachments
4. Send the message
5. Receive confirmation email

Note that you must send the unsubscribe email from your subscription email address. Also, the newsletter name must be exactly as it appears in your newsletter's email subject: CIVIL-DEFENCE-NEWSLETTER

---

## Contact

Emergency Management Manager Jim Burrows, Nelson City Council, [email](#) and phone 546 9500  
Public Information Manager Penny Bloomberg, Nelson City Council, [email](#) and phone 546 0223